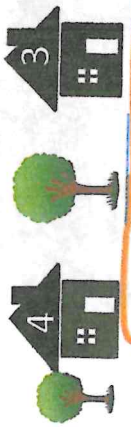


Taylor Historic Home Tour

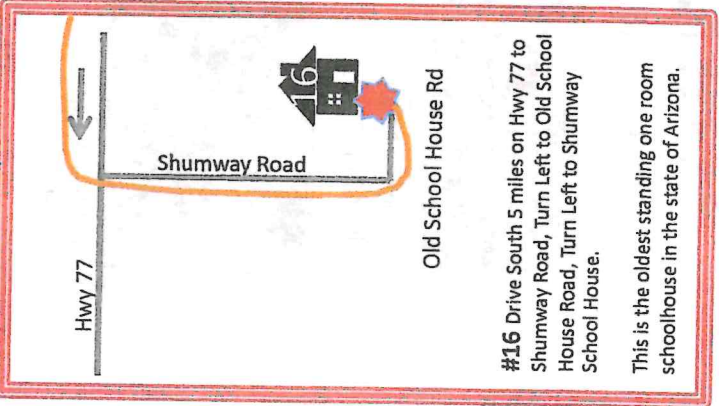


S MAIN STREET

OPTION #16: Drive South 5 miles to Shumway School House.

Silver Creek

OPTION #16: Directions to Shumway School House



#16 Drive South 5 miles on Hwy 77 to Shumway Road, Turn Left to Old School House Road, Turn Left to Shumway School House.

This is the oldest standing one room schoolhouse in the state of Arizona.

Willow

Cemetery

Tumbleweed

Center St

ROBERTO Grounds
#2 MEMORIAL



Maverick

S MAIN STREET

Center St



POST OFFICE

Tumbleweed

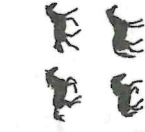
Silver Creek



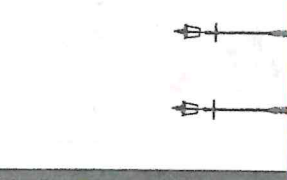
FAMILY DOLLAR

Feed Store

Maverick



Cattle Lane



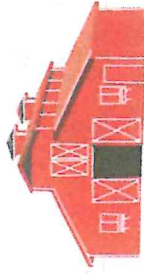
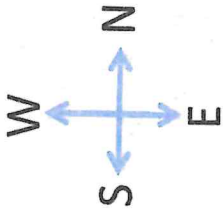
Cattle Lane



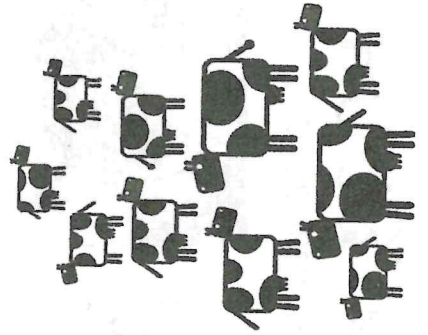
Paper Mill Rd



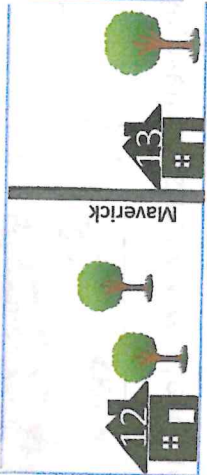
Taylor Bell Tower
(Next to Pizza Hut)



Silver Creek



Cattle Lane



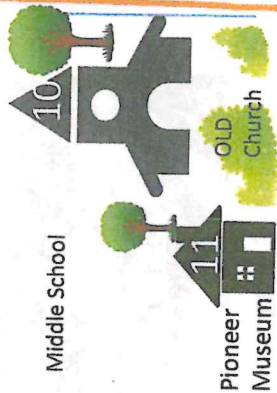
Maverick

500 E



Maverick

Center St



Middle School

Pioneer Museum

OLD Church

400 E

Willow

Willow



400 E

TOWN OF TAYLOR HISTORIC HOME TOUR

Welcome to Taylor! We hope you enjoy your tour today! www.visitsnowflaketaylor.com 928-536-4331



#1 Taylor Museum
4 N. Main Street



#2 Taylor Memorial
4 N. Main Street



#3 Brimhall/Shumway
210 S. Main Street



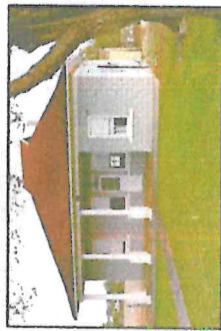
#4 Standifird Home
306 S. Main Street



Taylor lies in a broad valley in east-central Arizona. The Mogollon Rim is to it's west and the White Mountains to the south. The Town's elevation is 5,640 feet. The mountains form an almost continuous barrier protecting Taylor from severe winters and creating a semi-arid climate. Taylor was settled by James Pearce and named after John Taylor, 3rd President of the Church of Jesus Christ of Latter-Day Saints. The town was established in 1878 and incorporated in 1966.



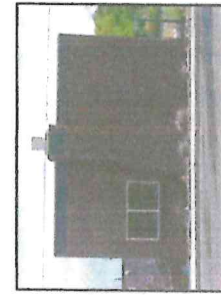
#5 Hancock Cabin
7 E. Willow



#6 Jordan Palmer Home
101 S. Main Street



#7 James Henry Lewis
1 S. Main Street



#8 Taylor Cash Store
19 E. Center



#9 AZ Palmer Home
26 E. Center



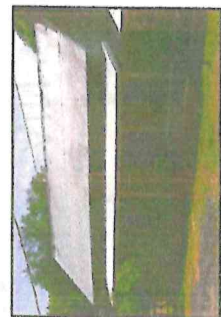
#10 Old LDS Church
313 E. Center



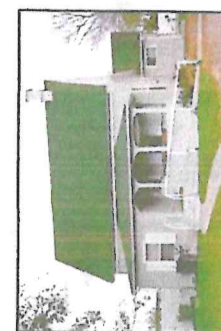
#11 Pioneer Museum
14 South 400 East



#12 Dewey Perkins Home
2 North 500 E



#13 Jesse N Perkins Home
102 N. 500 E.



#14 Jennings Home
121 N. 500 E.

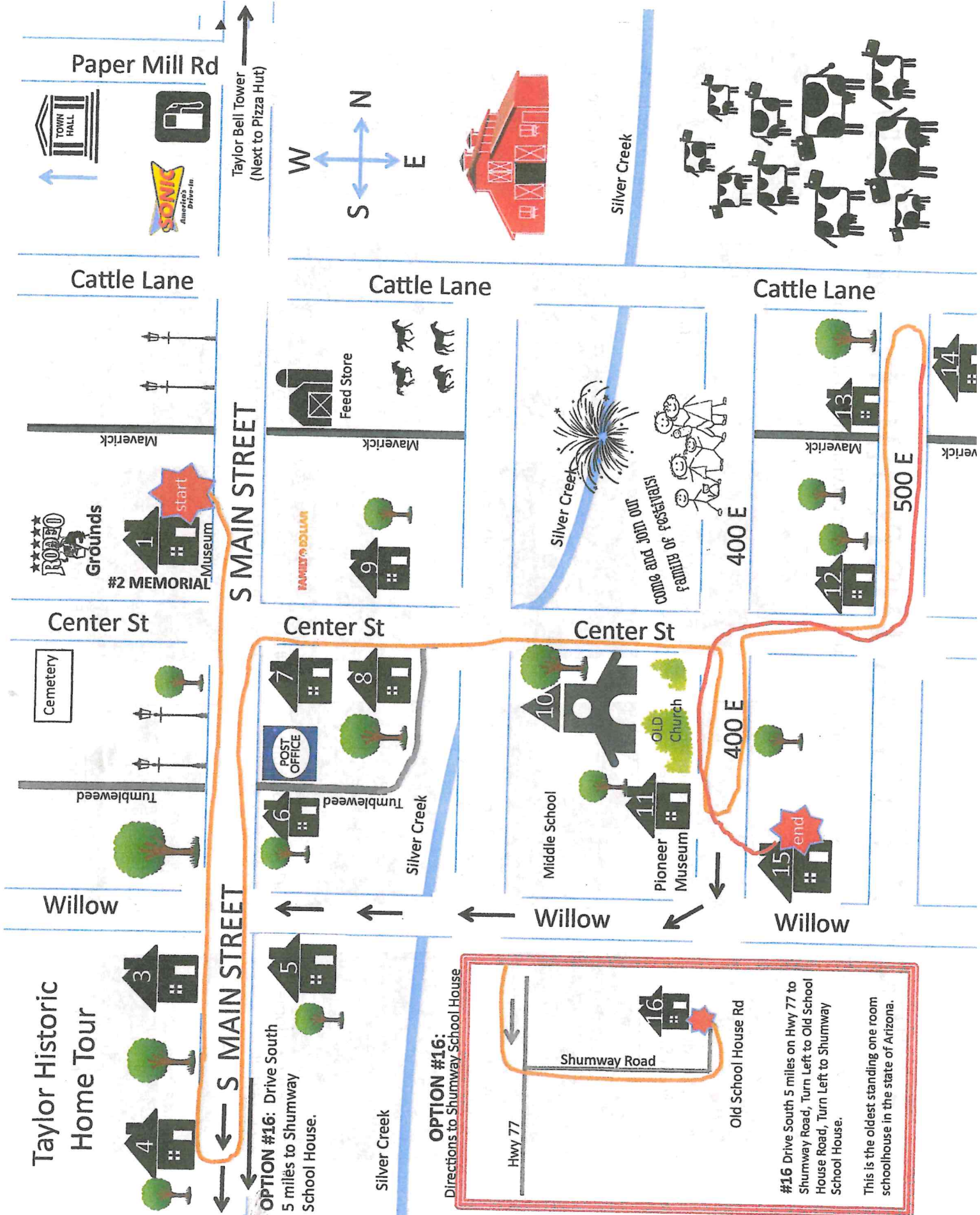


#15 ET Hatch Home
129 S. 400 E.

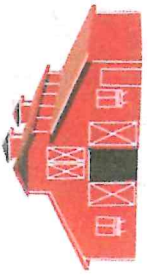
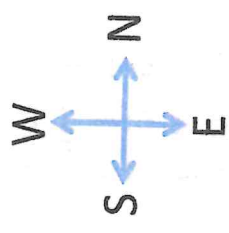


#16 Shumway School House
Old School House Road

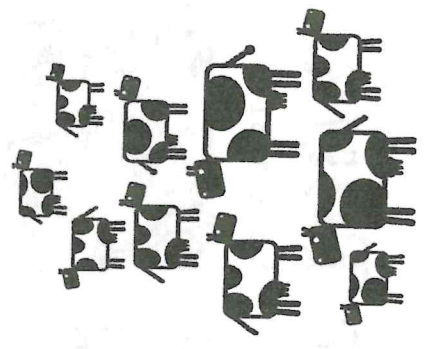
Taylor Historic Home Tour



Taylor Bell Tower
(Next to Pizza Hut)



Silver Creek



Paper Mill Rd



Cattle Lane

Cattle Lane

Cattle Lane

Maverick

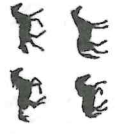
Maverick

Maverick

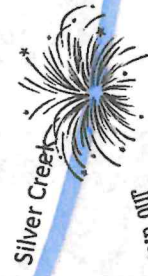
verick



Feed Store



FAMILY'S BOLLMAN



Silver Creek



400 E



500 E

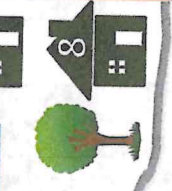
Center St

Center St

Center St



Tumbleweed



Tumbleweed

Silver Creek



Middle School



Pioneer Museum

400 E



Willow

Willow

Willow

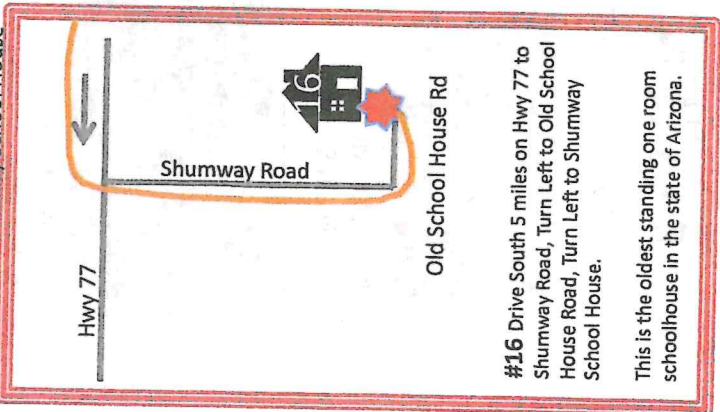
Willow

S MAIN STREET

OPTION #16: Drive South 5 miles to Shumway School House.

Silver Creek

OPTION #16: Directions to Shumway School House



#16 Drive South 5 miles on Hwy 77 to Shumway Road, Turn Left to Old School House Road, Turn Left to Shumway School House.

This is the oldest standing one room schoolhouse in the state of Arizona.

TOWN OF TAYLOR HISTORIC HOME TOUR

Welcome to Taylor! We hope you enjoy your tour today! www.visitsnowflaketaylor.com 928-536-4331



#1 Taylor Museum
4 N. Main Street



#2 Taylor Memorial
4 N. Main Street



#3 Brimhall/Shumway
210 S. Main Street



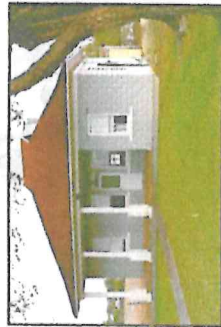
#4 Standifird Home
306 S. Main Street



Taylor lies in a broad valley in east-central Arizona. The Mogollon Rim is to it's west and the White Mountains to the south. The Town's elevation is 5,640 feet. The mountains form an almost continuous barrier protecting Taylor from severe winters and creating a semi-arid climate.



#5 Hancock Cabin
7 E. Willow



#6 Jordan Palmer Home
101 S. Main Street



#7 James Henry Lewis
1 S. Main Street



#8 Taylor Cash Store
19 E. Center



#9 AZ Palmer Home
26 E. Center



#10 Old LDS Church
313 E. Center



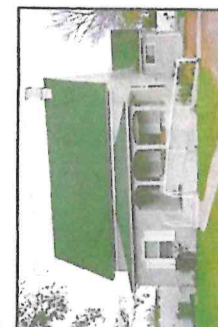
#11 Pioneer Museum
14 South 400 East



#12 Dewey Perkins Home
2 North 500 E



#13 Jesse N Perkins Home
102 N. 500 E.



#14 Jennings Home
121 N. 500 E.



#15 ET Hatch Home
129 S. 400 E.



#16 Shumway School House
Old School House Road

Taylor was settled by James Pearce and named after John Taylor, 3rd President of the Church of Jesus Christ of Latter-Day Saints. The town was established in 1878 and incorporated in 1966.